

EzCon

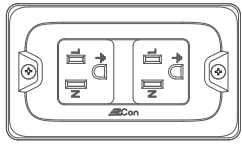
產品說明書 / 保證書

三孔牆壁插座

EzCon15x2-BS

產品內含

- 1 三孔牆壁插座 2 產品說明書/保證書



產品規格

產品名稱 / 型號	三孔牆壁插座 / EzCon15x2-BS
使用電壓	110V AC / 60HZ
額定電壓	125V AC / 60HZ
額定電流	15A Max.
額定功率	1650W Max.
負載類型	一般應用
防雷擊突波保護	符合IEC 61000-4-5 規範 最大突波吸收電壓: 2000V (1.2/50us) 最大突波吸收電流: 1000A (8/20us) 最大突波吸收能量: 175J (10/1000us)
遙控頻率	433.92MHz (遙控開關功能, 需另購EzCon遙控器)
工作溫度範圍	1 ~ +40 °C
儲存溫度範圍	-20 ~ +60 °C
產品尺寸	L119.5 × W69.5 × H48.5 mm
產品重量	145 g
生產地	台灣 (Made in Taiwan)

若需要無線遙控功能, 歡迎選購EzCon遙控器產品 (型號: TX-RC-1), 一個EzCon遙控器, 可遙控開關單個或同時多個三孔牆壁插座。本公司保留改進產品權利, 產品性能及說明如有變更, 恕不另行通知, 如需更詳細之產品資訊, 請造訪我們的網站:
<https://www.teamyoung.com>

產品功能

1. 插座電源開 / 關

上電時, 會自動開啟三孔牆壁插座輸出, 斷電時, 即關斷插座輸出; 也可另外選購EzCon遙控器, 遙控牆壁插座開關電源。

(1) 插座輸出開啟:

● 指示燈綠燈恆亮 插座狀態: 開通, 有電源輸出

(2) 插座輸出關斷 或 前端斷路器(Breaker)電源未連接/未開啟

○ 指示燈無燈號顯示 插座狀態: 關斷, 無電源輸出

2. 電器用電過載 / 短路保護

(1) 當電器有異常過載或短路現象, 牆壁插座的輸出會快速關斷保護:

⚡ 指示燈慢速閃爍: 過載保護 插座狀態: 關斷, 無電源輸出

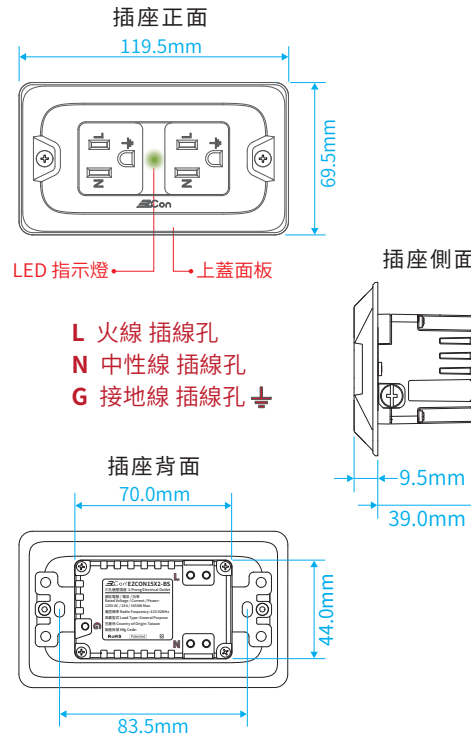
⚡ 指示燈快速閃爍: 短路保護 插座狀態: 關斷, 無電源輸出

(2) 過載 / 短路保護發生後, 需經前端電箱內的電源斷路器開關(Breaker)復歸, 重新開啟牆壁插座:

① 先移除過載或短路的電器。

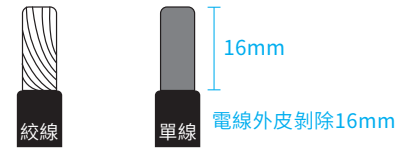
② 然後關斷前端電箱內的電源斷路器開關(Breaker), 再重新打開斷路器的開關, 若牆壁插座的指示燈恆亮綠燈, 即可正常使用。

產品外觀介紹圖



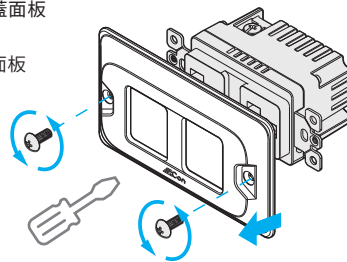
三孔牆壁插座安裝步驟

1. 安裝前, 請確實斷開前端總電源 (關斷電箱斷路器開關)。
2. 連接輸入電源線
(1) 建議使用Φ1.6~2.0mm (14~12AWG) 單芯銅線, 禁止使用絞線。



(2) 拆開插座上蓋面板

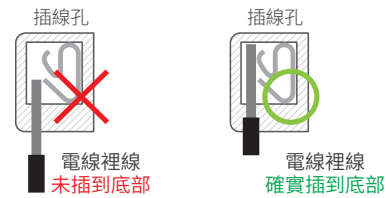
- ① 鬆開螺絲
- ② 拆開上蓋面板



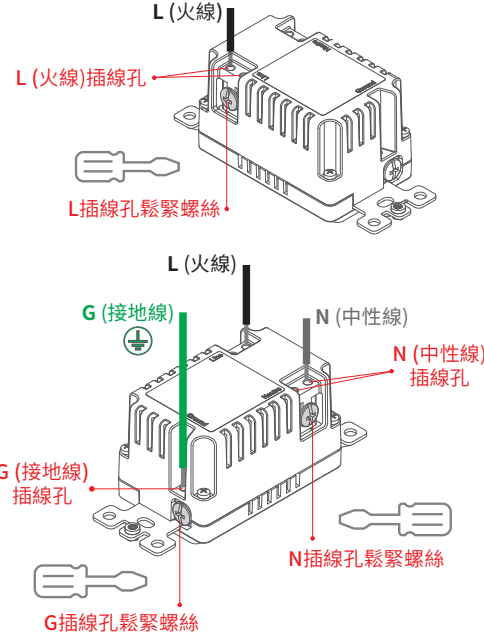
(3) 將電源線導入插線孔

依照下述安裝步驟, 將L、N及G電源線導入插線孔, 並確實鎖緊螺絲固定:

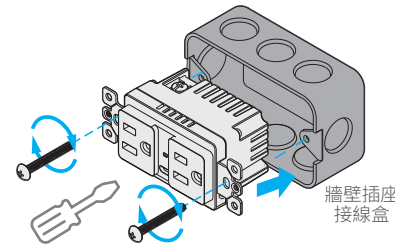
- ① 鬆開螺絲, 將電源線導入插線孔
- ② 電線導入插線孔時, 裡線請確實插到底部
- ③ 電源線確實導入插線孔後, 旋緊螺絲固定



- 將L(火線)、N(中性線)及G(接地線)導入插線孔, 並確實鎖緊螺絲固定

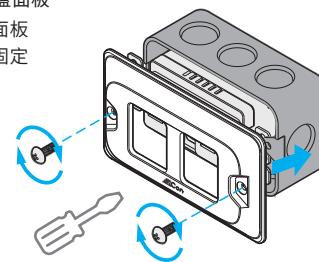


- (4) 將插座放入插座盒, 並確實鎖緊螺絲固定

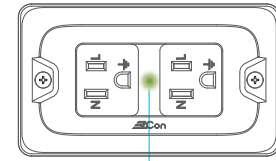


(5) 裝回插座上蓋面板

- ① 蓋回上蓋面板
- ② 旋緊螺絲固定



3. 確認安裝完成後, 打開前端總電源開關 (開啟電箱斷路器開關)



打開前端總電源後, LED指示燈 恆亮綠燈, 表示三孔牆壁插座已可正常使用, 插座孔有電源輸出, 並可連接電器。

安全使用注意事項

- 請依照說明書安裝步驟進行產品安裝。
- 安裝本產品前, 請先關斷前端總電源。
- 本產品為室內使用, 請勿用於潮濕、高溫環境中。
- 請勿超出產品額定規格使用, 2只插座最大負載功率合計不可超出1650W, 最大電流不可超出15A。
- 產品如有破損變形、功能異常時, 應停止使用並進行汰換。
- 請勿使用化學溶劑、腐蝕性物品、去漬油及漂白水擦拭清潔本產品。
- 為保證使用安全, 請務必在使用前仔細閱讀產品說明書。

保固期限及產品保證書

- A. 購買本產品憑本保證書自購買日期起, 可享有一年保固, 但保固範圍並不包括耗材。
- B. 於免費保固期間, 如因下列狀況所導致之損壞, 並不包括在保固範圍內, 若需送回維修, 本公司或經銷商將酌收材料工本費:
 - a. 未依本產品手冊之使用提示進行安裝及操作或使用未經認可之配件者。
 - b. 因不可抗拒之天災意外、蟲鼠害及人為疏忽導致之損壞。
 - c. 誤用、濫用、蓄意破壞、現場溫/濕度環境不良、未依規定使用電源電壓/電流致使本產品超過電壓/電流負載所導致本產品之損壞。
 - d. 購買後因運輸、移動、摔落、撞擊所造成的之故障及損壞。
 - e. 非經銷商及原廠技術人員自行拆解EZCon®相關產品所造成之損壞。
 - f. 特殊環境使用也不在保固範圍內, 如高溫潮濕、硫磺區等容易腐蝕地區。
- C. 本產品已投保兆豐產物保險產品責任險1億元台幣。

EzCon

產品保證書

產品型號	EzCon15x2-BS
產品批號 (製造代碼)	
購買地點	
購買日期	
經銷商 / 原廠蓋章	

*此證書不會被重新發行, 請妥善保管。

*產品批次的第5至第6碼表示製造年份, 例如 912-20XXXXXXX的製造年是2020年。

天揚精密科技股份有限公司
台灣桃園市中壢區環北路400號18樓之一
Tel: +886-3-2805160 Fax: +886-3-2805182
<https://www.teamyoung.com>



MANUAL-52-V1

EzCon

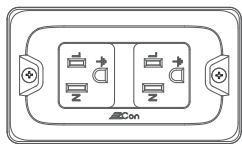
Product Manual / Warranty

3-Prong Electrical Outlet

EzCon15x2-BS

Package Contents

- 1 3-Prong Electrical Outlet 2 Product Manual / Warranty



Product Specifications

Product Name / Model	3-Prong Electrical Outlet / EzCon15x2-BS
Applied Voltage	110V AC / 60HZ
Rated Voltage	125V AC / 60HZ
Rate Current	15A Max.
Rated Power	1650W Max.
Standby Power	Less than 0.5W
Surge Protection	Meet the requirements of IEC 61000-4-5 (Refer Note 1)
Radio Frequency	433.92 MHz (Refer Note 2)
Load Type	General Application
Working Temperature	1 ~ +40 °C
Storage Temperature	-20 ~ +60 °C
Dimension	L119.5 x W69.5 x H48.5 mm
Weight	145 g
Country of Origin	Taiwan

Notes:

- The surge protection abilities of electrical outlet:
Maximum Surge Voltage Absorption Capability: 2KV (1.2/50us)
Maximum Surge Current Absorption Capability: 1KA (8/20us)
Maximum Surge Energy Absorption Capacity: 175 Joules
- If you need remote control function, optional EzCon remote controller TX-RC-1 is available. One EzCon remote controller can control single or multiple electrical outlets. Instruction of remote controller and more product details, please visit our website. <https://www.teamyoung.com>

Product Functions

1. ON/OFF Switch Function

When power is on, the outlet is automatically switched on, and when the power is off, the outlet is switched off. An optional remote controller TX-RC-1 is available for remotely control ON/OFF of the outlet.

(1) When the outlet output is turned on:

- LED indicator on: normal operation, the outlet output is on.

(2) When the outlet output / Circuit breaker is turned off:

- LED indicator off: The front-end power supply is disconnected, turned off or the outlet output is switched off.

2. Electricity overload / Short circuit protection

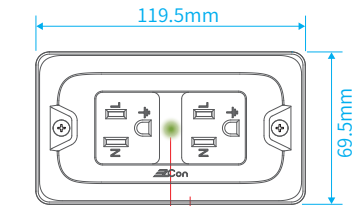
(1) When the electrical appliance has an abnormal phenomenon of current overload or short circuit ; the output of the outlet will be quickly switched off for protection.

- LED indicator flashes quickly: abnormal-short circuit protection, the outlet output is off.
- LED indicator flashes slowly: abnormal-overload protection, the outlet output is off.

(2) The reset procedure is to disconnect the overloaded or short-circuited electrical appliance first, then switch off the front-end main power breaker, and then switch on the main power breaker again. If the LED indicator shows green (constantly bright without flashing), it indicates reset completed and can be used normally.

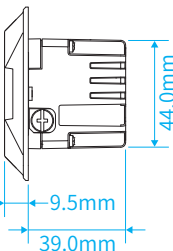
Product Appearances

Front side of Outlet



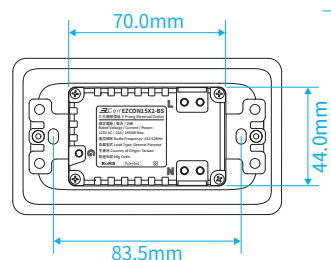
LED Indicator Front Cover

Side of Outlet



L Line(Hot) Wire
N Neutral Wire
G Ground Wire

Rear side of Outlet



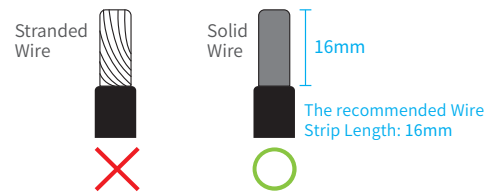
Installation Steps of Outlet

1. Before installation, please make sure to switch off the front-end main power breaker.

2. Connect the power wire

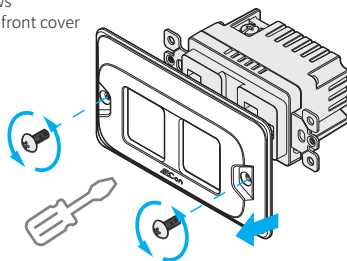
(1) Wire Gauge Requirement

It is recommended to use 14~12AWG (Φ1.6~2.0mm) solid copper wire, and the use of stranded wire is prohibited.



(2) Disassemble the front cover of the outlet

- Loosen the screws
- Disassemble the front cover



(3) Follow the below installation steps to correctly guide the L, N and G wire into the terminal block holes separately, and securely tighten the screws.

- Loosen the screw, insert the power wire into the terminal block hole.
- When inserting the wire into the terminal block hole, please make sure to insert the inner wire deeply to the bottom.
- Securely tighten the terminal screws after the power wire is inserted into the terminal block hole.

Terminal block hole



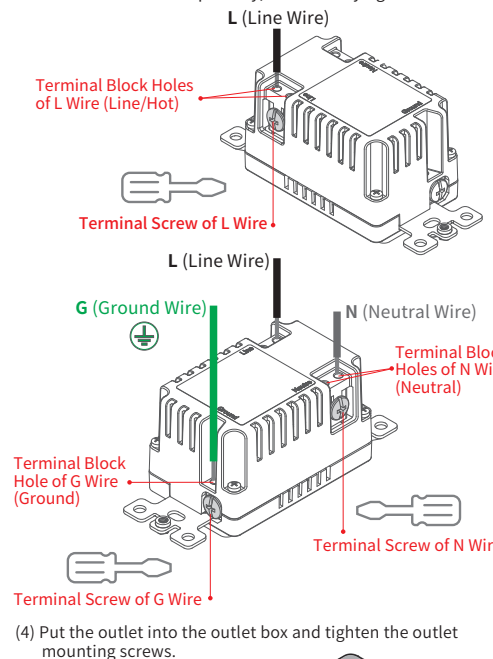
The inner wire is not inserted deeply into the bottom.

Terminal block hole

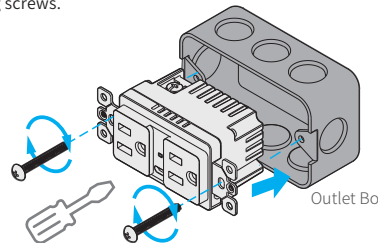


The inner wire is inserted deeply into the bottom indded.

- Insert the L(Line/Hot),N(Neutral) and G(Ground) wires into the terminal block holes separately, and securely tighten the screws.

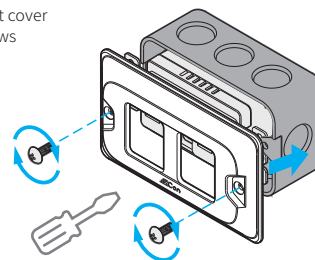


(4) Put the outlet into the outlet box and tighten the outlet mounting screws.

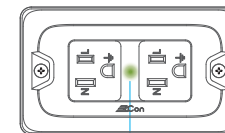


(5) Reinstall the front cover of the outlet

- Replace the front cover
- Tighten the screws



3. After completing the installation, switch on the front-end main power breaker.



After switching on the front-end main power breaker, the LED indicator will show steady green, indicating that the outlet is ready for normal use with outlet power on and can be connected to electrical appliances.

LED indicator on: normal operation, the outlet output is on.

Precautions for Safe Use

- Please follow the installation steps in the manual to install the product.
- Before installing this product, please flip the front-end main power breaker fully to the off position.
- This product is for indoor use, please do not use it in humid or high temperature environments.
- Do not exceed the rated specifications of the product. The total maximum load power of the two outlets is 1650W, and the maximum current is 15A.
- Stop using and replace it if the product is damaged, deformed, or malfunctions.
- Do not use chemical solvents, corrosive materials, cleaning naphtha and bleach to clean the product.
- Please read the product manual carefully before use to ensure safety.

We reserve the right of product improvement. Product performance and description are subject to change without notice. For more detailed product information, please visit our website. <https://www.teamyoung.com>

Product Warranty

- The product with this warranty has one-year guarantee from the date of purchase. But the warranty does not include the consumables.
- During free warranty period, any damage caused due to the following situations will be excluded from the warranty. The company or distributors may charge material and handling cost if the product needs to be returned for repair.
 - The installation or operation of the product does not follow the instruction of the manual, or the unapproved accessories are used.
 - The damage is caused by irritable natural disasters, pests or human negligence.
 - Damage caused by misuse, abuse, sabotage, poor on-site temperature and humidity environment, failure to use power supply according to the regulation on voltage/current, which makes the product exceed the voltage and current load.
 - Failure or damage occurred due to transportation, movement, falling, or impact after purchase.
 - Damage caused by dismantling products by non-distributors or non-original manufacturer technicians.
 - Use product in the special environments is not covered by the warranty, such as high temperature and humidity areas, sulfur areas, etc., which are prone to corrosion.
- This product has been insured with NT\$100 million product liability insurance in Taiwan provided by the Chung Kuo Insurance Co., Ltd.



Product Warranty Certificate

Product Model	EzCon15x2-BS
Batch No. (Mfg. Code)	
Place of purchase	
Date of purchase	
Seal of Distributor/Manufacturer	

*This warranty will not be reissued. Please keep it safe.

*The 5th to 6th codes of the Batch No. indicate the year of manufacture, for example, the year of manufacture for 912-20XXXXXXX is 2020.

TEAM YOUNG TECHNOLOGY CO., LTD.
18F-1, NO.400, HUANBEI RD., ZHONGLI DIST.,
TAOYUAN CITY 32070, TAIWAN (R.O.C.)
Tel : +886-3-2805160 Fax : +886-3-2805182
<https://www.teamyoung.com>



MANUAL-52-V1